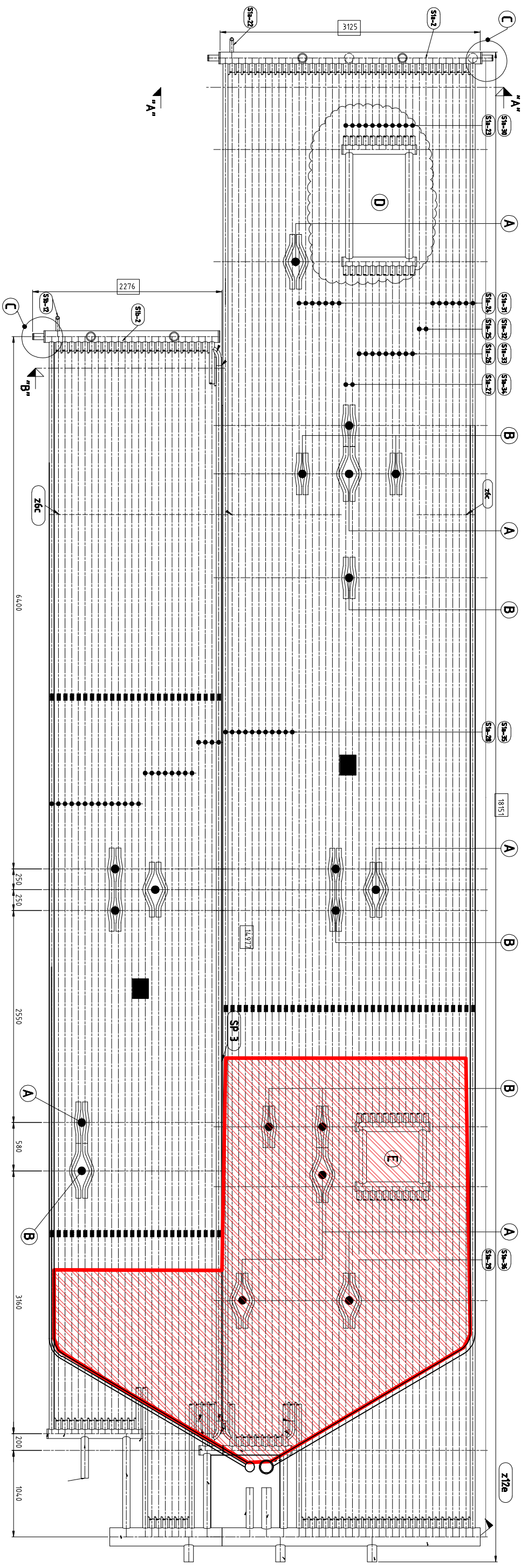


COMITENTE:
 CIB S.p.A.
 Via IV Novembre, 18
 00187 Roma (RM)

COMITENTE:
 Impianto trattamento RSU con recupero energetico di
 Monte (RM)

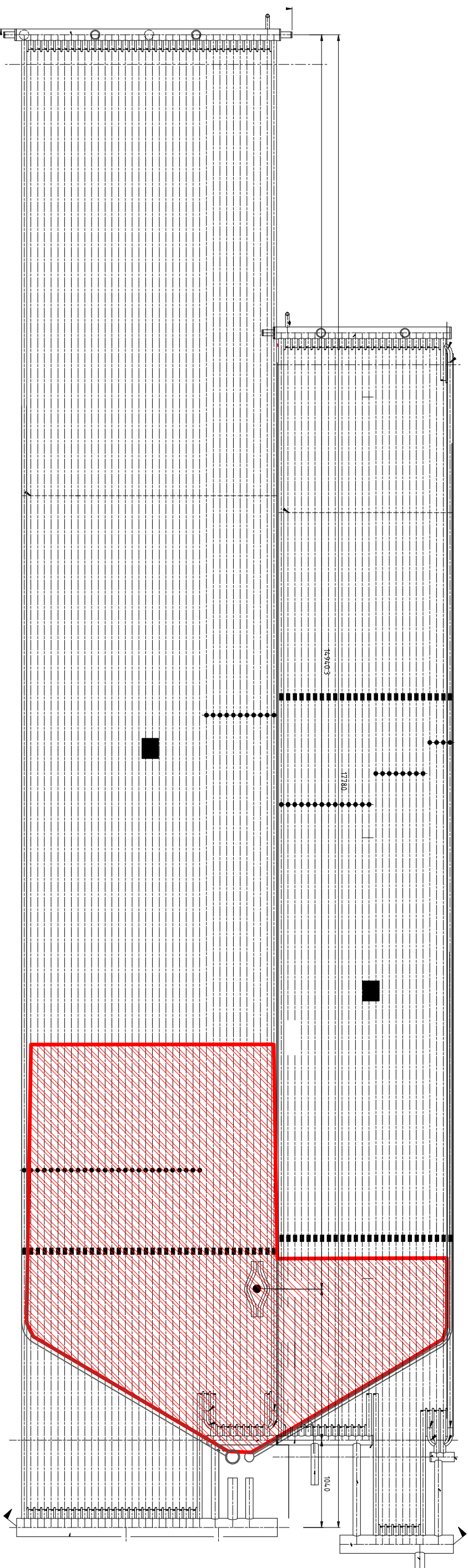
DESCRIZIONE:
 Disegno generale intervento
 Disegno costruttivo

PROV.: L1
 REV.: 00



DESCRIPTION	UNITS	DESIGN DATA
Fluid	---	Boiler Feed Water
steam generation	kg/h	13,300
Code of Construction	---	LSPELSL (Resolvia VSC + Recomendaciones C11 Resolvia M e Resolvia S, rev. 1995 - edición 1999)
Operating pressure	bar	40
Design Pressure	bar	51
Shop Hydro Test - See Note 9	bar	---
Operating Temperature	°C	253
Design Metal Temperature	°C	273
Min.Design Metal Temperature(MDMT)	°C	+20
Heating surface area	sq.m	75
Corrosion Allowance	mm	2
Radiography of Butt welds at shop	%	100
Joint Efficiency Factor	---	1.0
Dye-Penetration Test at shop	%	100
Additional Loads	---	NIL
Impact Test Requirements	---	NIL
Production Test Coupon Requirement	---	NIL
Inspection/Notified Body	---	TÜV INDUSTRIE SERVICE - n°0035
Conformity	---	PED 97/23/CE, CATEGORY IV, MODULE G
Water Holding capacity (Flooded)	Liters	2157
Empty weight	kg	9721
Test Weight	kg	11878

COMITENTE: GIS S.P.A. Via W. Tobagi, 16 51037 Montale (PT)			
COMITENTE: Impianto trattamento RSU con recupero energetico di Montale (PT)			
Disegno: Linea 1 - Parete S1 Disegno costruttivo parete			
PROJECT MANAGER:	COORDINATORE IN FASE DI PROGETTAZIONE:		
		TAV.: L1_S1-00	REV.: 00



DESCRIPTION	UNITS	DESIGN DATA
Fluid	--	Boiler Feed Water
steam generation	kg/h	13.300
Code of Construction	--	U.S. P.E.S.L. (Regoloni RS2 + Recommendations C.11 Regoloni M e nocella S. rev. 1995 - edizione 1999
Operating pressure	(PS)	40
Design Pressure	(PS)	51
Shop Hydro Test - See Note.9	(PT)	--
Operating Temperature	(TW)	253
Design Metal Temperature	(TS max)	273
Min.Design Metal Temperature(MDMT)	(TS min)	+20
Heating surface area	sq.m	75
Corrosion Allowance	mm	2
Radiography of Butt welds at shop	%	100
Joint Efficiency Factor	--	1.0
Dye-Penetrant Test at shop	%	100
Additional Loads	--	Nil
Impact Test Requirements	--	Nil
Production Test Coupon Requirement	--	Nil
Inspection/Notified Body	--	TÜV INDUSTRIE SERVICE - n°0035
Conformity	--	PED 97/23CE, CATEGORY IV, MODULE G
Water holding capacity (rounded)	liters	2162
Empty weight	kg	9722
Test Weight	kg	11895

COMITENTE:
CIS S.p.A.
 Via W. Toschi, 16
 51037 Montale (PT)

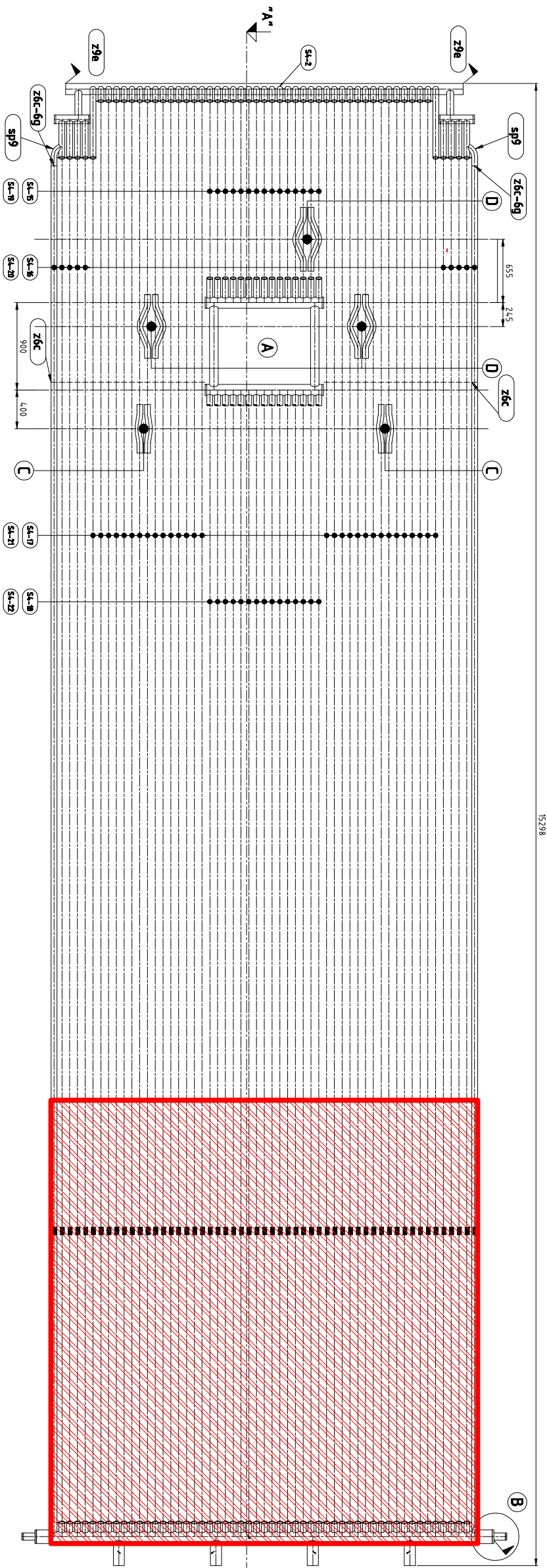
COMITENTE:
 Impianto trattamento RSU con recupero energetico di
 Montale (PT)

TAV: L1_S2-00
 REV.: 00

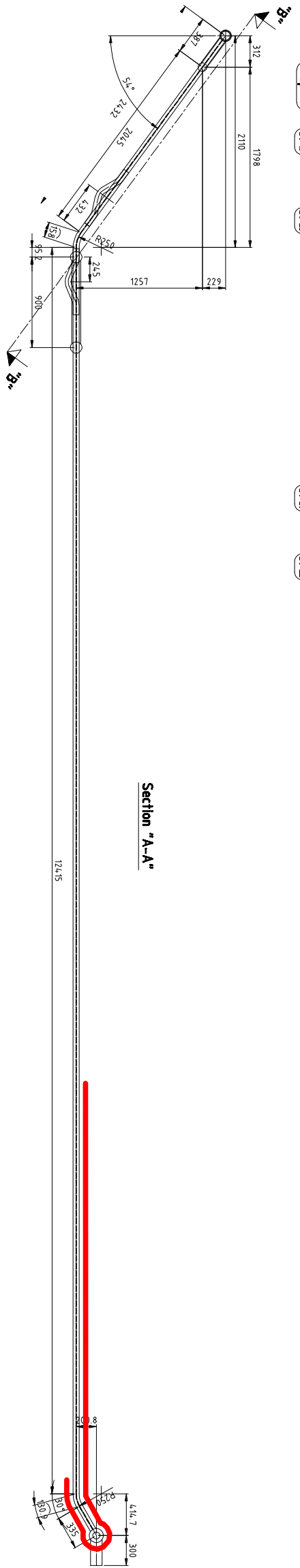
disegno:
Linea 1 - Paralelo S2
Disegno costruttivo parete

PROJECT MANAGER:
**COORDINATORE IN FASE DI
 PROGETTAZIONE:**

--	--



15298



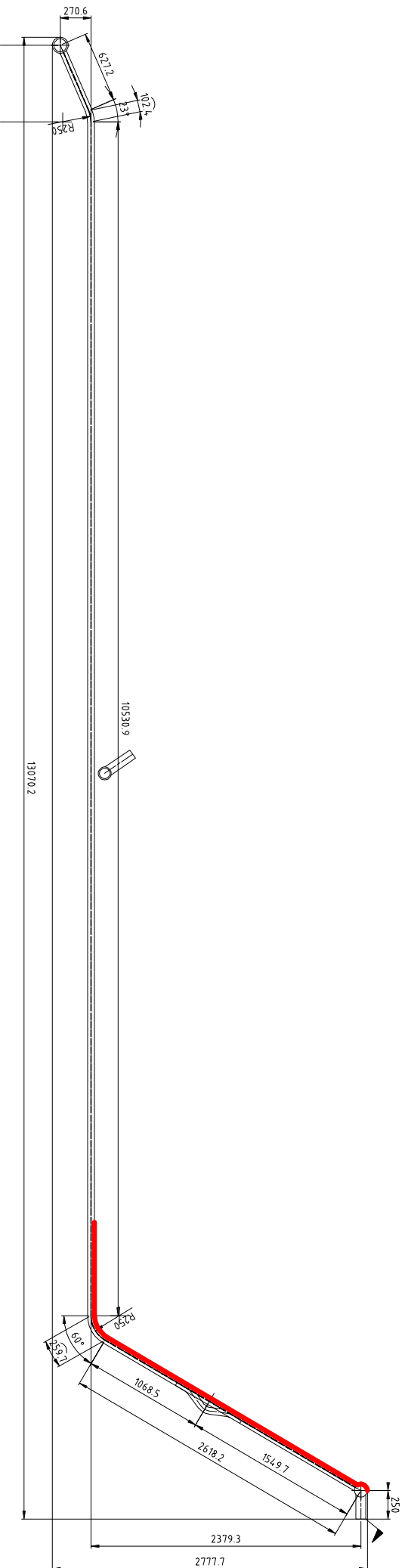
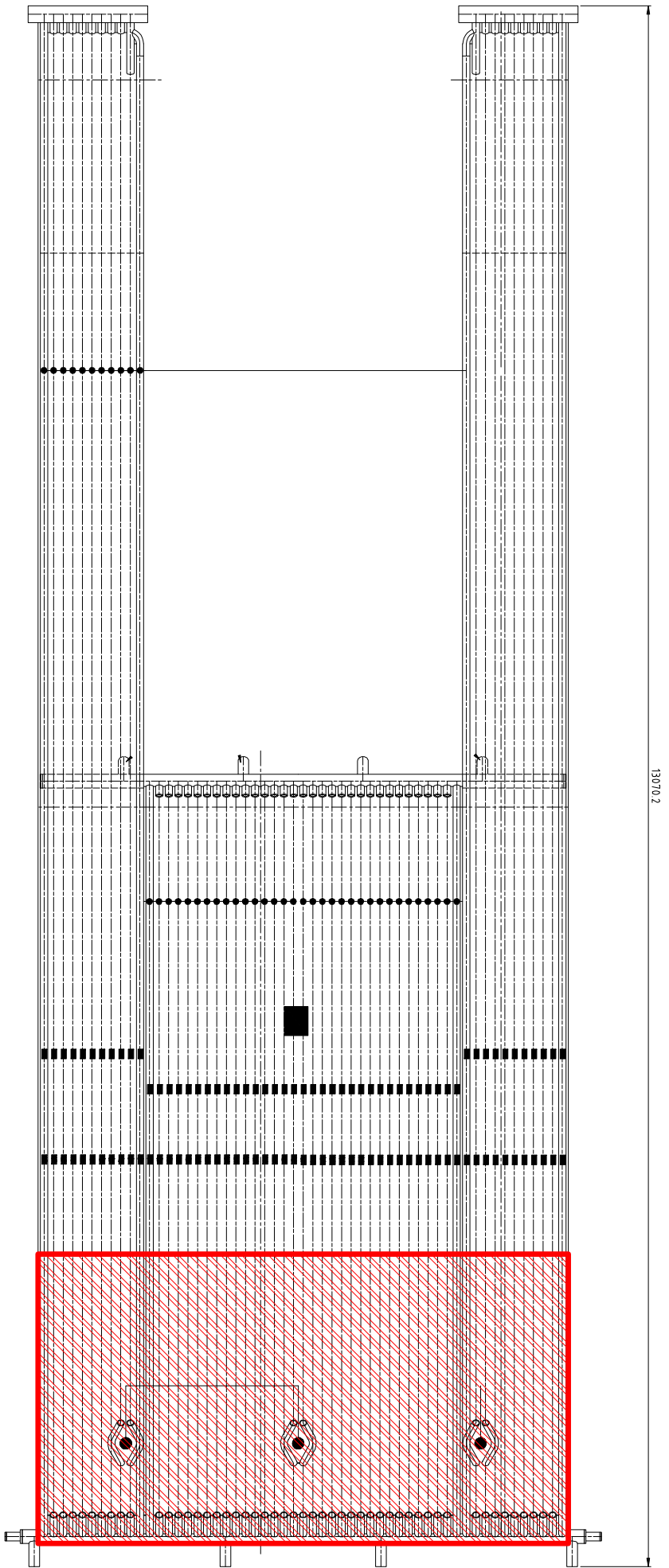
Section "A-A"

COMITENTE:
CIS S.p.A.
 via W. Totegi, 16
 51037 Montale (PT)

COMITENTE:
**Impianto trattamento RSU con recupero energetico di
 Montale (PT)**

disegno:
 Linea 1 - Parete S4
 Disegno costruttivo parete

TAV.: L1_S4-00	REV.: 00



COMITENTE:
CIS S.p.A.
 Via W. Tobagi, 16
 51037 Montale (PT)

COMITENTE:
Impianto trattamento RSU con recupero energetico di Montale (PT)

DISEGNO:
 Linea 1 - Parola S5
 Disegno costruttivo parete

TAV.: **L1_S5-00**

REV.: 00
